



GMT MONTHLY MEMBERSHIP PROGRESS REPORT

Results as of: 3/31/2024

Multiple District 315

LOCATION: REP OF BANGLADESH

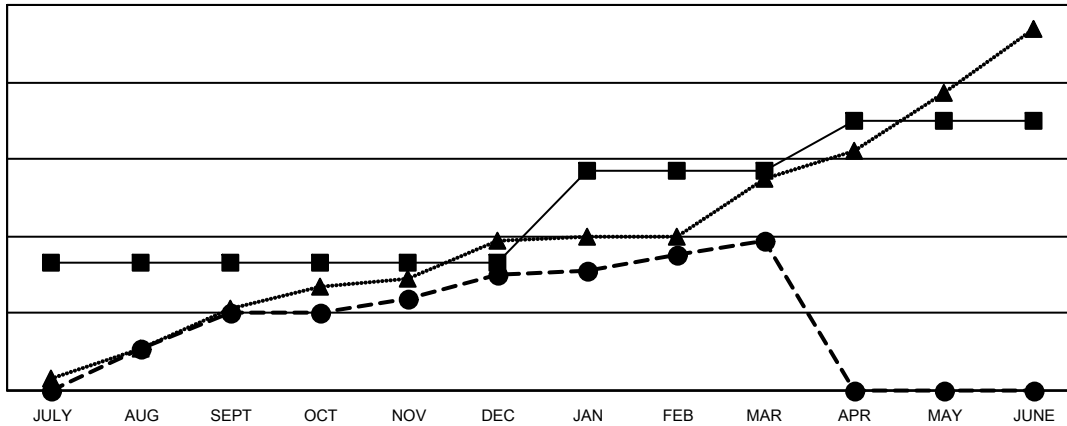
GMT: OPEN

GMT CA 6 - S

| Clubs | | | |
|-----------------------|---------------|-----------|---------------|
| RESULTS FOR 2023-2024 | | | |
| QUARTER | NEW CLUB GOAL | NEW CLUBS | DROPPED CLUBS |
| JULY/AUG/SEPT | 33 | 20 | 2 |
| OCT/NOV/DEC | 0 | 10 | 27 |
| JAN/FEB/MAR | 24 | 9 | 21 |
| APR/MAY/JUNE | 13 | 0 | 0 |

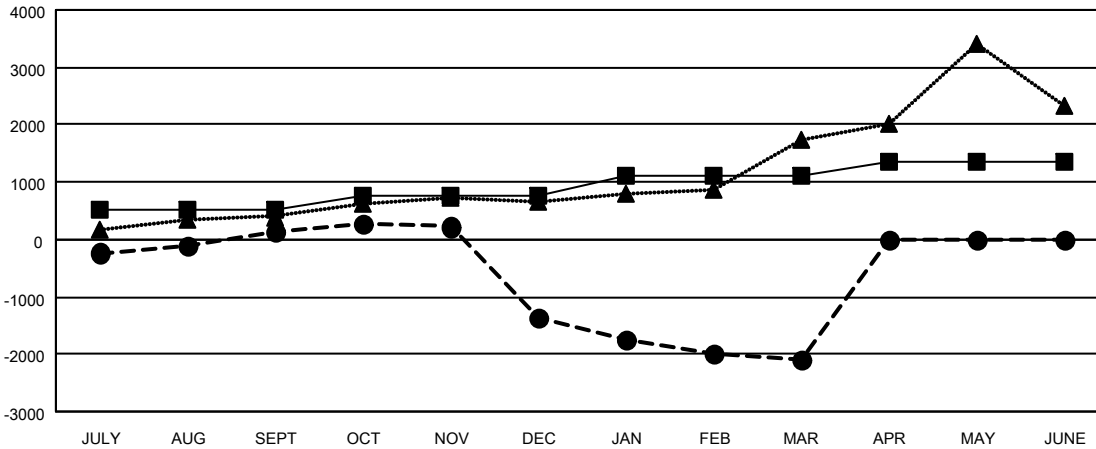
| Members | | | |
|-----------------------|------------------------|----------------------|--|
| RESULTS FOR 2023-2024 | | | |
| QUARTER | MEMBER GROWTH NET GOAL | MEMBER GROWTH ACTUAL | DROPPED MEMBERS ACTUAL (including transfers) |
| JULY/AUG/SEPT | 514 | 1,119 | 744 |
| OCT/NOV/DEC | 245 | 1,060 | 2,248 |
| JAN/FEB/MAR | 348 | 879 | 1,429 |
| APR/MAY/JUNE | 243 | 0 | 0 |

GOALS AND ACTUAL NEW CLUBS CUMULATIVE



- - CURRENT YEAR GOALS FOR NEW CLUBS
- - CURRENT YEAR ACTUAL NEW CLUBS
- ▲ - LAST YEAR ACTUAL NEW CLUBS

GOALS AND ACTUAL MEMBERS CUMULATIVE



- - MEMBER GROWTH NET GOAL
- - MEMBER GROWTH ACTUAL
- ▲ - LAST YEAR MEMBERSHIP ACTUAL

| | | |
|------------------------|---|---------------------------------------|
| DROPPED CLUBS: 50 | 311 CLUBS OF 821 ADDED 1 OR MORE NEW MEMBERS | GENDER DISTRIBUTION |
| | | MALE 16,192 (77.47%) |
| | | FEMALE 4,708 (22.53%) |
| DROPPED MEMBERS | CLICK HERE FOR CUMULATIVE MEMBERSHIP DATA | TOTAL FAMILY UNIT MEMBERS 5,987 |
| DECEASED 13 | | FAMILY MEMBERS PAYING HALF DUES 4,200 |
| CLUB CANCELLED 1,420 | | |
| OTHER 2,988 | | |
| TOTAL 4,421 | | |